

Waterproof Fuse Holder

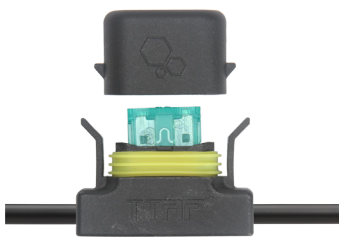
WFH-K Series

Mini Blade Fuse Type



The WFH-K overMolded ,heavy-Duty & waterproof Inline Fuse Holder for mini Blade fuses with protective cover for harsh environments.

2 to 25 amps. Supplied 2.5mm² (AWG14) cable



Mini Blade Fuse Current Range

2A, 3A, 4A, 5A, 7,5A, 10A, 15A, 20A, 25A



6,3 x 0,8 mm Flag Terminal



Internal Print: PP White



2.5 mm² Cable



Technical Specifications

Body Material
IP Class
Operating Temperature
Contact Material
Sealing Ring
Max. Current Range

PA6
IP68
-40°C ~ +100°C
Brass With Nickel Plated
Silicone
25A

