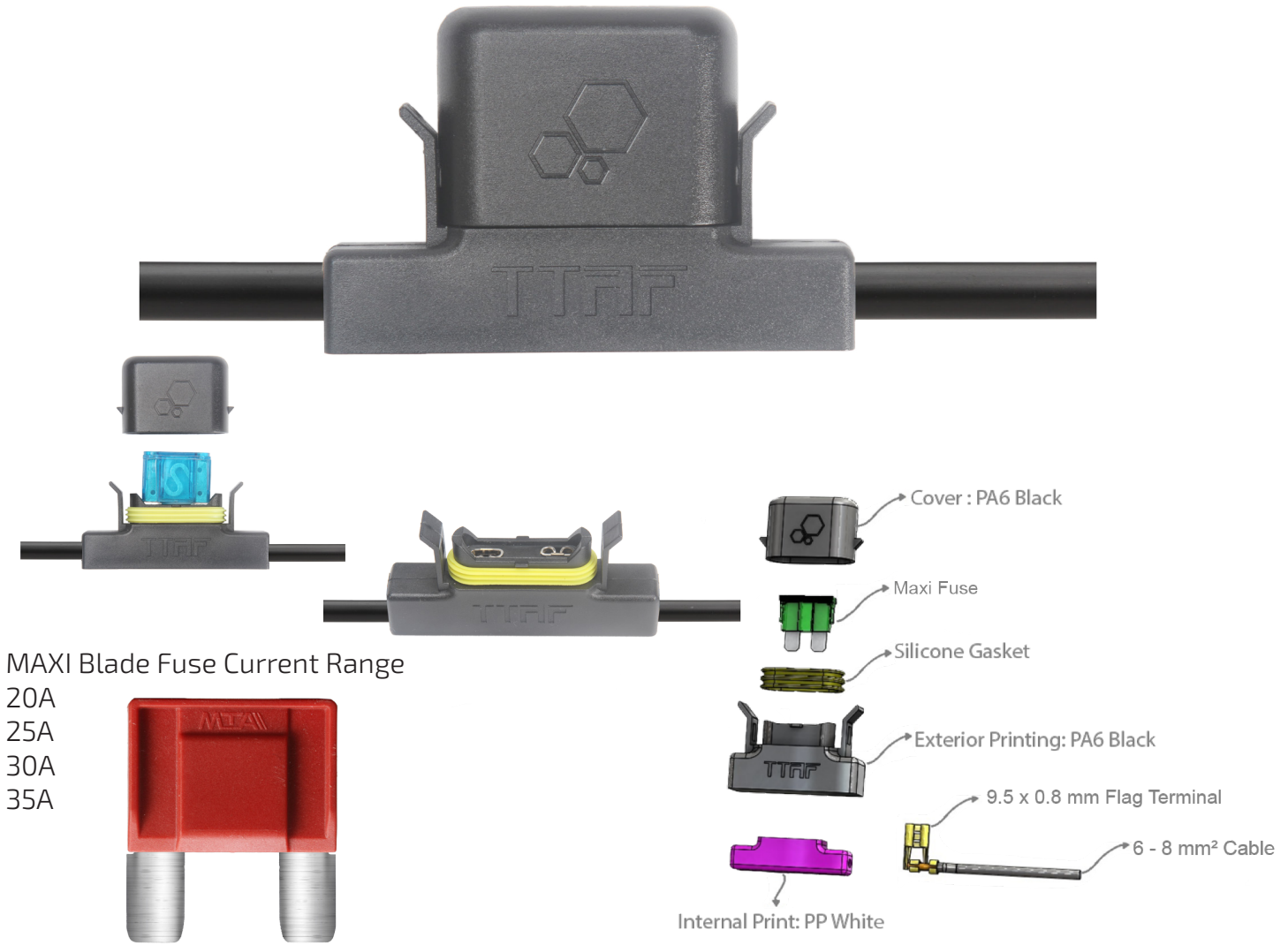


## Maxi Blade Fuse Type



The WFH-M overMolded ,heavy-Duty & waterproof Inline Fuse Holder for maxi Blade fuses lwith protective cover for harsh environments.

20 to 35 amps. Supplied 6mm<sup>2</sup> (AWG10) cable



### Technical Specifications

Body Material	PA6
IP Class	IP68
Operating Temperature	-40°C ~ +100°C
Contact Material	Brass With Nickel Plated
Sealing Ring	Silicone
Max. Current Range	35A

