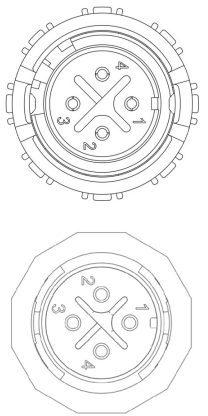
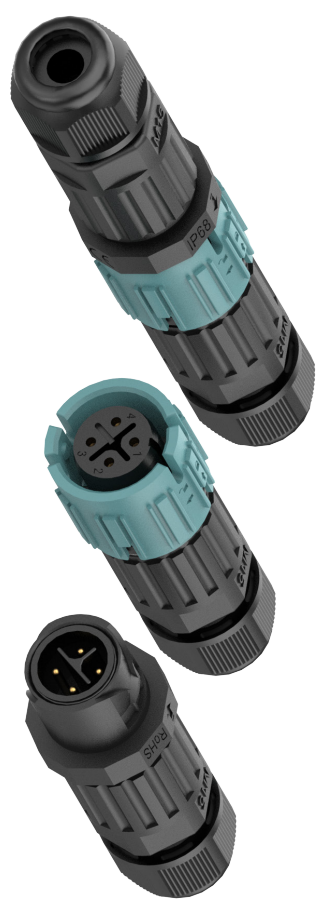


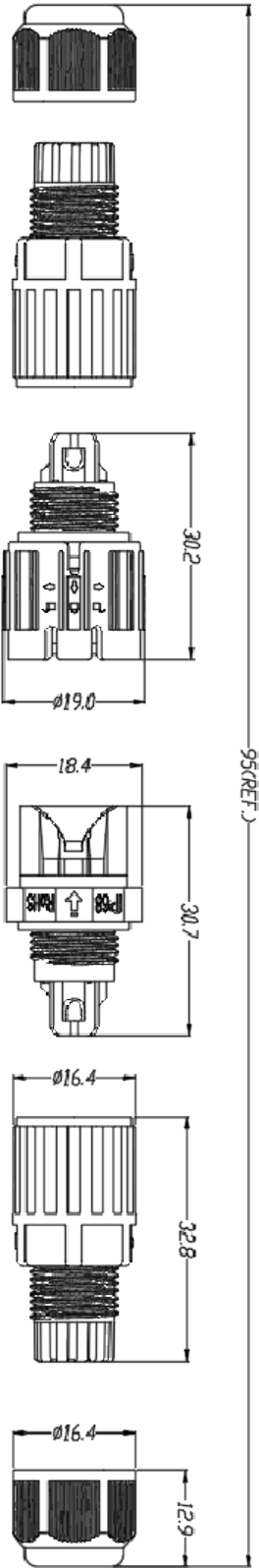
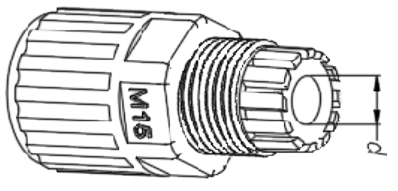
1	2	3	4	5	6
Raw Material	PA66, SILICONE, COPPER ALLOY	TOLERANCE UNSPECIFIED			
Certification	CQC/RoHS/CE	X. ±0.35	X.XX ±0.10	X.° ±3°	X.X° ±2°
Flame-resistant rating	UL94 V-0	X.X ±0.20	X.XXX ±0.05	X.XXX ±1°	X.XXX ±1°
Level of protection	IP68				
Voltage rating/Current rating	450 V / 10 A				
Withstanding voltage	2500 V				
Cable gague	0.5~1mm <sup>2</sup>				
Operating temperature	-40~105 °C				



Female connector Male connector



Rubbers Diameter



Part Number	Rubbers Diameter (d)	Outer Cable Diameter
WPI-M15-MF-04M10	φ 6.5 mm	φ 3.5~7 mm

Date	-	Rev.	-	Revision Detail	Rev/Dt.	Rev/by	Part No
Designed by	Rahla MUZAC	Checked by	Esin YÜKSEL				4 Pin Lehim Tipi Dişi-Erkek Su Geçirmez İkonnetör IP68
				Drawing No.	Scale	Sheet No	
				WPI-M15-MF-04M10	NONE	1/1	