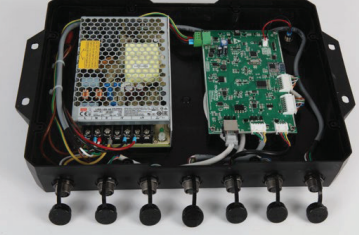
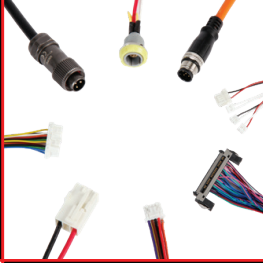


ENDÜSTRİYEL CONSUMER

TTAF KONNEKTÖR



PCB DIZAYN



Çok çeşitli
kablo grubu
ihtiyaçları için
geniş kapsamlı
üretim kabiliyetleri



CABLE ASSEMBLY





HAKKIMIZDA



70'den fazla ülkeye ihracat yapan küresel bir şirket



Ara bağlantı çözümleri, kablo montajları, telekom / datacom, aydınlatma ve medikal çözümlerin lider tedarikçisi.

Çeşitli pazarlarda güçlü bir şekilde konumlanmış geniş çözüm yelpazesine sahip.



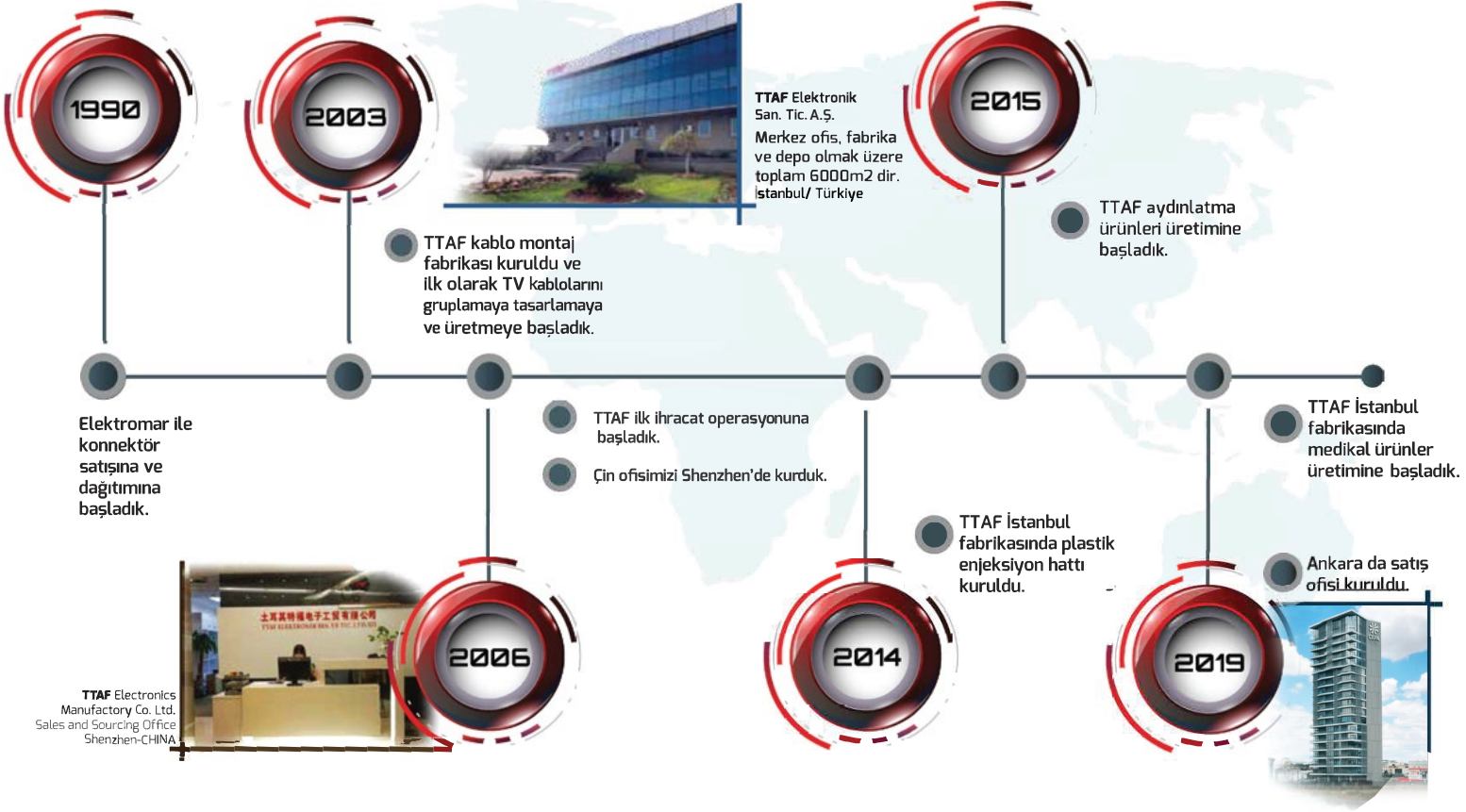
Yüksek teknoloji ortamında gerçekleştirilen Ar&Ge faaliyetleri, her zaman yeniliği ve özgün ürün tasarımlarını hedeflemektedir.



TTAF®

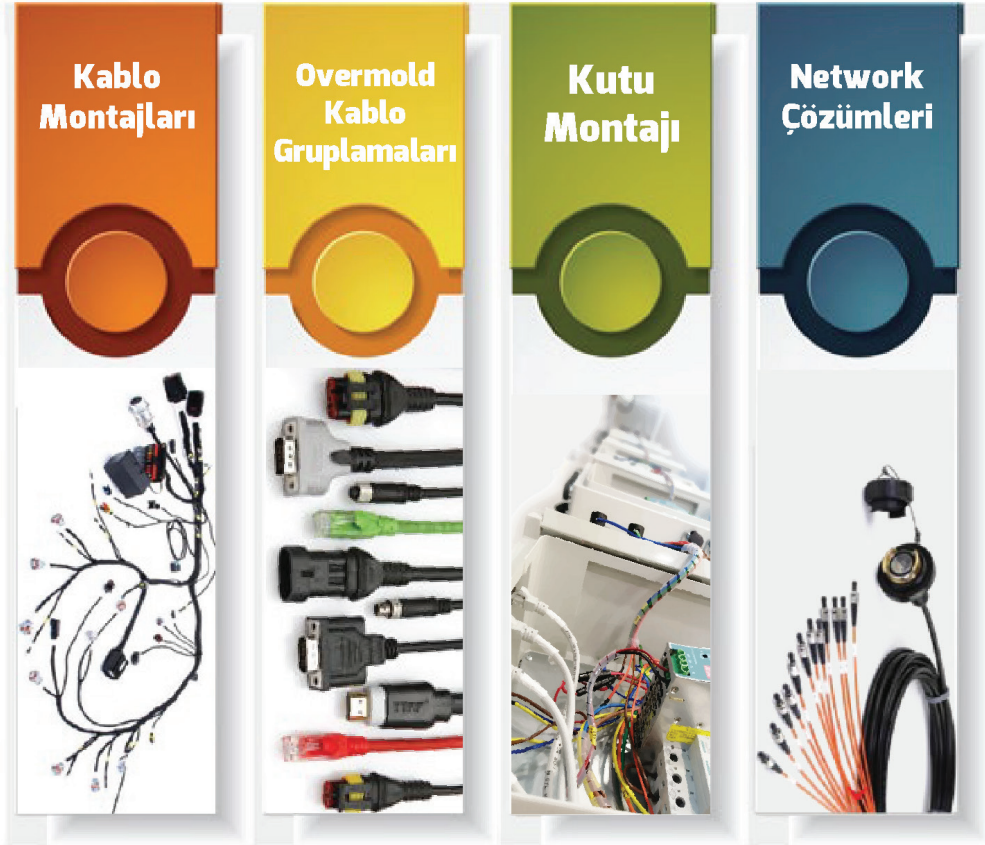
TARİHÇE

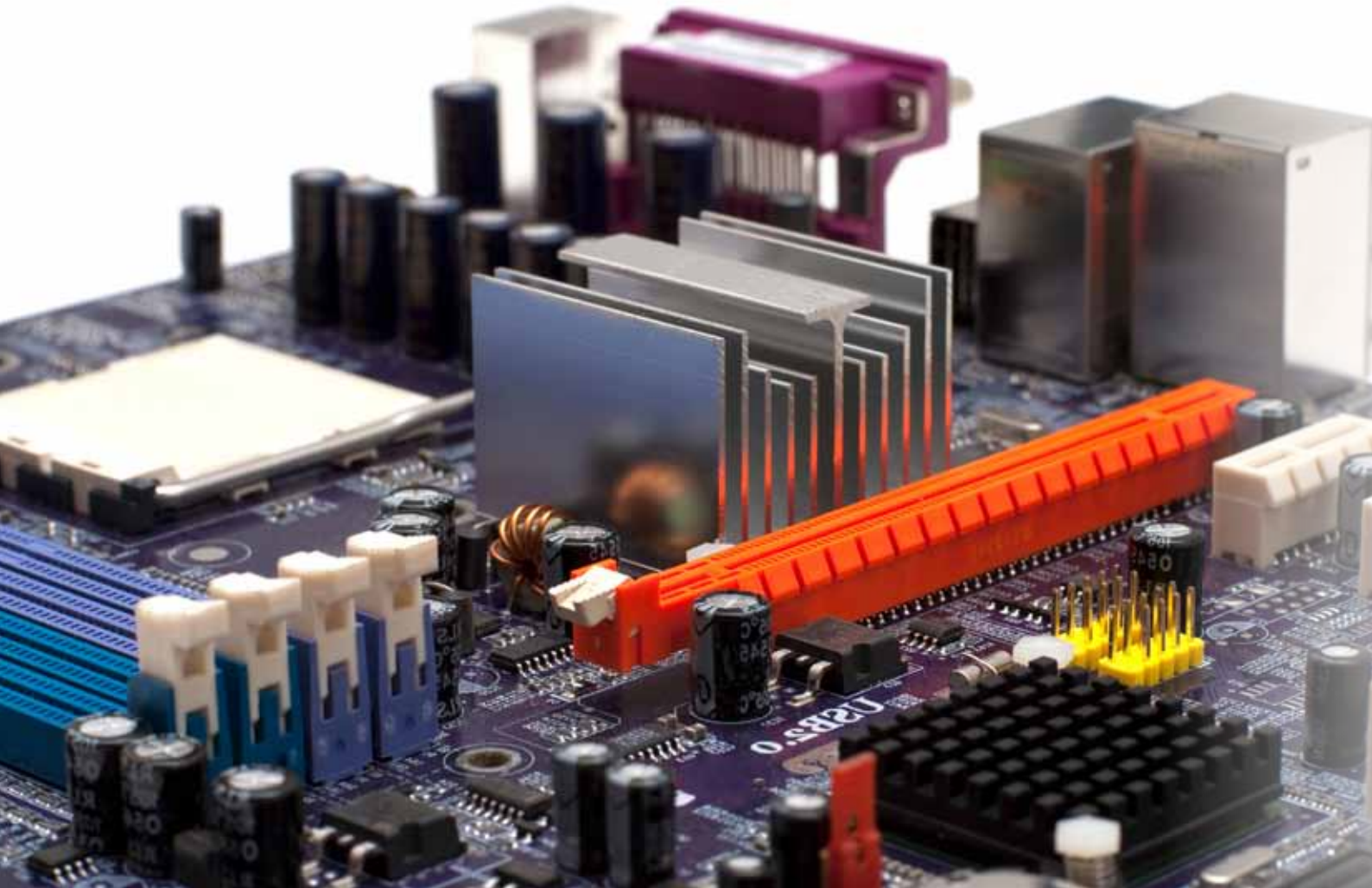
ZAMAN ÇİZELGESİ



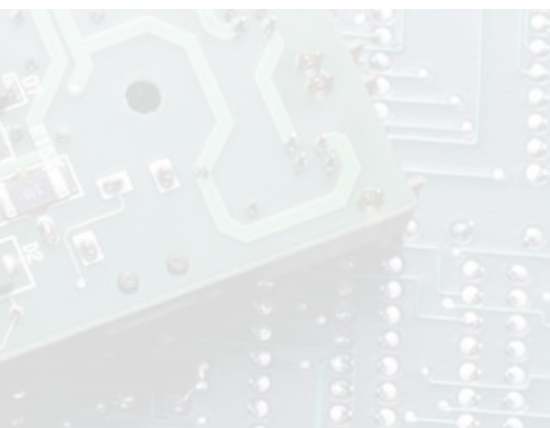


ÜRÜN GRUPLARI





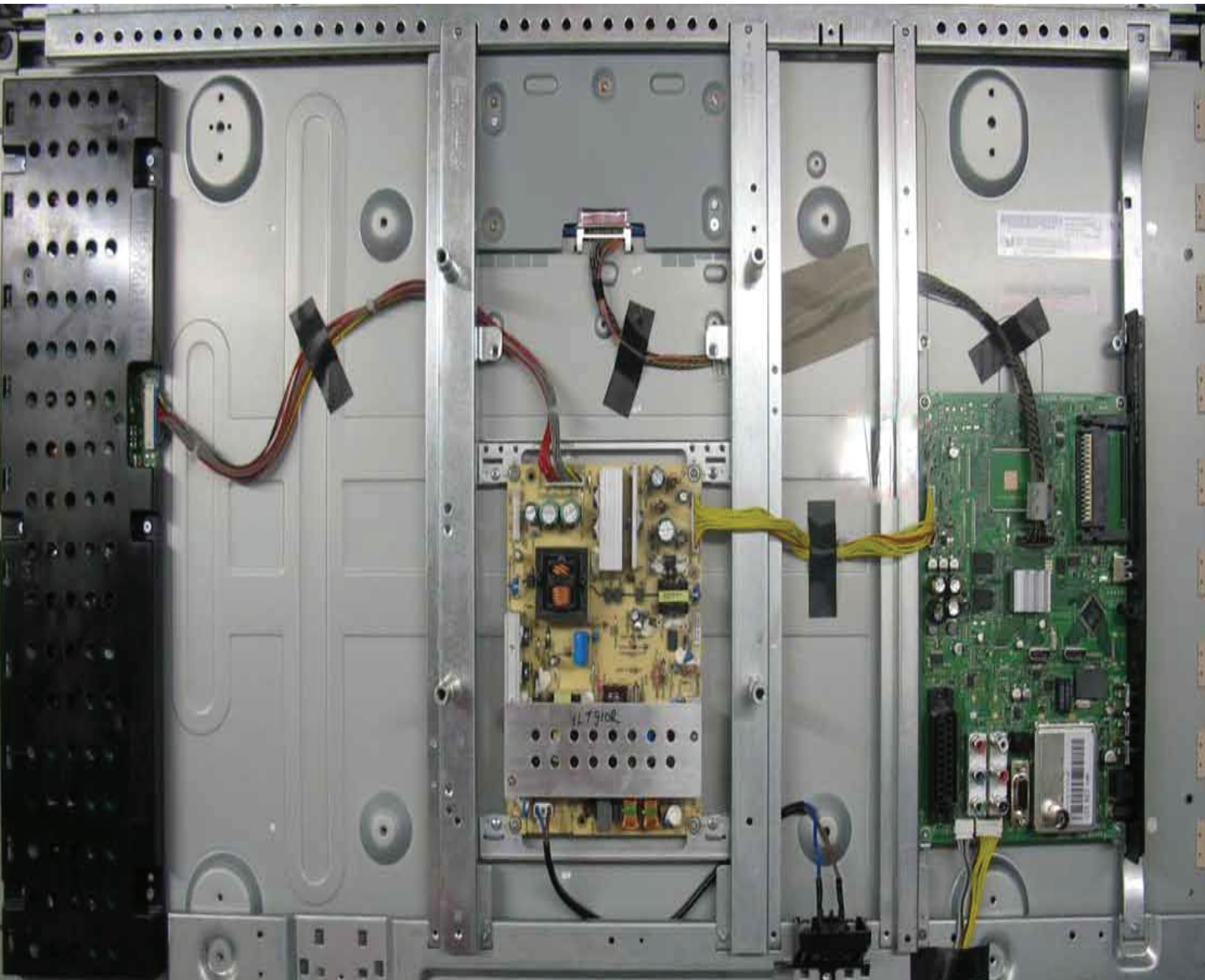
Health and Safety



Warehouses

INDEX

Cable Assemblies	4
Wire To Board Connectors	6
Wire To Wire Connectors	13
D-Sub Connectors	14
DVI Connectors	15
Headers	16
Pin Headers	18
Jumper Connectors	19
IC Sockets	20
Card Edge Connectors	21
Modular Jacks & Plugs	22
XLR, MIC Connectors	23
Power Connectors	24



CABLE ASSEMBLIES

1. LVDS
2. INVERTER
3. POWER
4. MICROCOAXIAL & FFC
5. MISCELLANEOUS



CONNECTORS

1625

Wire To Board



0,5 mm (0,019") Pitch Size Wire To Board

1625-xx-x

TERMINAL : 1625- TD
: 1625- TS

SP: SMD Type Straight Male
RP: SMD Type 90° Bent Male
H : Housing

No Of Contact: 21.31.41.51 Pin

1750

Wire To Board



1 mm (0.039") Pitch Dual Row Wire To Board

1750-xx-x

Terminal 1750-TP

RP : SMD Type Right Angle Board
H : Housing

No Of Contact : 8.14.20.30 Pin

1600

Wire To Board



1mm (0.039") Pitch Wire To Board

1600-xx-x

Terminal : 1600-TP

SP: SMD Type Straight Wafer
RP: SMD Type Right Angle Wafer
H : Housing

No Of Contact : 2 To 20 Pin

1630

Wire To Board



1 mm (0.039") Pitch Wire To Board

1630-30-xx

1630-TP

XH
EH

No Of Contact : 30 Pin

1620

Wire To Board



1 mm (0,039") Pitch Size Wire To Bord

1620-xx-x

TERMINAL : 1620-TP

SP: SMD Type Straight Male
RP: SMD Type 90° Bent Male
H : Housing

No Of Contact: 21.31.41.51 Pin

1640

Wire To Board



1 mm (0,039") Pitch Wire To Board

1640-xx-x

Terminal : 1640-TP

SP : SMD Type Straight Male
RP: SMD Type 90° Bent Male
H : Female
HL: Locked Series

No Of Contact: 20.30.40.50 Pin

**1700***Wire To Board*

1.25 mm (0.049") Pitch Wire To Board

1700-xxH

Terminal 1700-TP

H: Housing

No Of Contact : 2 To 15 Pin

1900*Wire To Board*

1.25 mm (0.049") Pitch Wire To Board

1900-xx-x

Terminal : 1900-TP

RP: SMD Type Right Angle Wafer
H : Housing

No Of Contact : 2 To 30 Pin

1800*Wire To Board*

1.25 mm (0.049") Pitch Wire To Board

1800-xx-x

Terminal 1800-TP

S : Straight Wafer
R : Right Angle Wafer
SP: SMD Type Straight Wafer
RP: SMD Type Right Angle Wafer
H : Housing

No Of Contact : 2 To 15 Pin

1950*Wire To Board*

1.25 mm (0.049") Pitch Wire To Board

1950-xx-x

Terminal : 1950-TP

S : SMD Type Straight Wafer
R: SMD Type Right Angle Wafer
H: Housing

No Of Contact : 2 To 15 To The 20.25.30 Pin

1200*Wire To Board*

1.25mm (0,049") Pitch Wire To Board

1200-xx-x

Terminal : 1200-TP

RP: SMD Type Right Angle Wafer
H : Housing

No Of Contact : 2 To 30 Pin

1500*Wire To Board*

1.25 mm (0.049") Pitch Dual Row Wire To Board

1500-xx-x

Terminal : 1900-TP

SP: SMD Type Straight Wafer
RP: SMD Type Right Angle Wafer
H : Housing

No Of Contact: 5 To 41 Pin

CONNECTORS

1000

Wire To Board



1.25 mm (0.049") Pitch Wire To Board

1000-xx-x

Terminal: 1000-TP

S: Straight Wafer
R: Right Angle Wafer
H: Housing

No Of Contact : 2 To 15 Pin

200G1

Wire To Board



2mm (0.079") Pitch Wire To Board

200G1-xx-x

Terminal 200G1-TP

S: Straight Wafer
R: Right Angle Wafer
SP: SMD Type Straight Wafer
RP: SMD Type Right Angle Wafer
H: Housing

No Of Contact : 2 To 16 Pin

1000D

Wire To Board



1.25 mm (0.049") Pitch Dual Row Wire To Board

1000D-xx-x

Terminal: 1000-TP

SP: SMD Type Straight Wafer
H: Housing

No Of Contact : 10.20.30.40 Pin

200G1-L

Wire To Board



2mm (0.079") Pitch Wire To Board

200G1-xx-x-L

Terminal 200G1-TPL

S: Straight Wafer
R: Right Angle Wafer
H: Housing

No Of Contact : 2 To 16 Pin

1120

Wire To Board



2mm (0.079") Pitch Wire To Board

1120-xx-x

Terminal : 1120-TP

S: Straight Wafer
R: Right Angle Wafer
H: Housing

No Of Contact : 2 To 15 Pin

**1110D***Wire To Board*

2mm (0.079") Pitch Dual Row Wire Board

1110D-xx-x

Terminal : 1110D-TP

S: Straight Wafer
R: Right Angle Wafer
H: Housing

No Of Contact : 10.12.14.16.18.20.22
24.26.28.30.32 Pin

2317*Wire To Board*

2.5mm (0.098") Pitch Wire To Board

2317-xx-x

Terminal : 2317-TP

S: Straight Wafer
R: Right Angle Wafer
H: Housing

No Of Contact : 2 To 20 Pin

1314*Wire To Board*

2mm (0.079") Pitch Wire To Board

1314-xxP

Terminal : 1314-T

No Of Contact : 1X40 (Single Row 1X40 Pin)
2X40 (Dual Row 2X40 Pin)

250G1*Wire To Board*

2.5mm (0.098") Pitch Wire To Board

250G1-xx-x

Terminal 250G1-TP

S: Straight Wafer
R: Right Angle Wafer
H: Housing

No of contact : 2 to 15 pin

1211*Wire To Board*

2 mm (0.079") Pitch Wire To Board

1211-xxP

Terminal : 1211-T

No Of Contact : 2 To 15 Pin

2317L*Wire To Board*

2.5mm (0.098") Pitch Wire To Board

2317-xx-x-L

Terminal : 2317-TP

S: Straight Wafer
R: Right Angle Wafer
H: Housing

No Of Contact : 2 To 20 Pin

CONNECTORS

2316

Wire To Board



2.5mm (0.098") Pitch Wire To Board

2316-xx-x

Terminal : 2316-T

S: Straight Wafer
R: Right Angle Wafer
H: Housing

No Of Contact : 2 To 15 Pin

1312

Wire To Board



2.54mm (0.100") Pitch Wire To Board

1312-xxP

Terminal : 1312-T

No Of Contact : 1X40 (Single Row 1X40 Pin)
2X40 (Dual Row 2X40 Pin)

1311

Wire To Board



2.5mm (0.098") Pitch Wire To Board

1311-xxP

Terminal : 1311-T

No Of Contact : 2 To 15 Pin

2319

Wire To Board



2.54mm (0.100") Pitch Wire To Board

2319-xx-x

Terminal : 2319-T

S: Straight Wafer
R: Right Angle Wafer
H: Housing

No Of Contact : 2 To 20 Pin

1313

Wire To Board



2.5mm (0.098") Pitch Right Angle Wire To Board

1313-xxP

Terminal : 1313-T

No Of Contact : 2 To 15 Pin

8979

Wire To Board



2.54 mm (0.100") Pitch Size Wire To Board

8979-xx-x

Terminal : 8979-T

S: PCB Type Straight Male
H: Housing

No Of Contact : 3.4.5.6.7.8.9 .10.11
12 Pin

**5558***Wire To Board & Wire To Wire*

3mm (0.138") Pitch Dual Row Wire To Board

5558-xx-x5558-MT Male Terminal
5558-FT Female TerminalS: PCB Type Straight Wafer
R: PCB Type Right Angle Wafer
W: Cable Type Wafer
H: Housing

No Of Contact : 2 Pin To 24 Pin

2001*Wire To Board*

3.96mm(0.156") Pitch Wire To Board

2001-xx-x

Terminal : 2001-TP

S: Straight Wafer
R: Right Angle Wafer
H: Housing

No Of Contact : 2 To 15 Pin

2220*Wire To Board*

3.96mm (0.156") And 5.08mm (0.200") Pitch Wire To Board

2220-xx-x-x

Terminal : 2220-TN

A: 3.96Mm(0.156")
B: 5.08Mm(0.200")S: Straight Wafer
R: Right Angle Wafer
H: Housing

No Of Contact : 2 To 20 Pin

8981*Wire To Board*

5.08mm(0.200") Pitch Wire To Board

8981-04-xTerminal : 8981- FT For Female Housing
8981- MT For Cable Type WaferS : PCB Type Straight Wafer
R : PCB Type Right Angle Wafer
W: Cable Type Wafer
H : Housing

No Of Contact : 4 Pin

CONNECTORS

2001-1H

Wire To Board



Cable To PCB

2001-xx-x

Terminal : 2001-TP

S: Straight Male
H: Housing

No Of Contact : 1 Pin

1150

Wire To Board



7,92mm (0,312") Pitch Wire To Board

1150-xx-x

Terminal : 1150 -TP

H: Female
S: Straight Male

No Of Contact: 2 Pin

2002

Wire To Board



Wire To Board

2002-xx-x

Terminal : 2000-TP

S: Straight Male
H: Housing

No Of Contact : 2.5 Pin

5557

Wire To Board & Wire To Wire



4.2mm (0.165") Pitch Dual Row Wire To Board

5557-xx-x

Terminal : 5557-FT For female housing
5557-MT For cable type wafer

S: PCB Type Straight Wafer
R: PCB Type Right Angle Wafer
W: Cable Type Wafer
H: Housing

No Of Contact : 2 Pin To 24 Pin



**3920***Wire To Wire*

1.3mm (0.051") Dia Wire To Wire

3920-xx-x3920-MT : Male Terminal
3920-FT : Female TerminalM: Male
F: Female

No Of Contact : 2.3.4.6.9.12.15 Pin

2005*Wire To Wire***2005-xx-x**Terminal : 2005- FT For Female Housing
2005- MT For Cable Type WaferM : Male
F : Female

No Of Contact : 2.3.4.5.6 Pin

9500*Wire To Board & Wire To Wire*

6.35mm (0.250") Dia Wire To Wire

9500-XX-x9500-MT: Male Terminal
9500-FT : Female TerminalM: Cable Type Male
F : Cable Type Female
W: PCB Type Male

No Of Contact : 2.3.4.6.9.12.15 Pin

9200*Wire To Wire*

2mm (0.079") Dia Wire To Wire

9200-xx-x9200-MT :Male Terminal
9200-FT : Female TerminalM: Male
F : Female

No of contact : 2.3.4.6.9.12.15 pin

WWW250*Wire To Wire*

2.5mm (0.098") Dia Wire To Wire

WW250-xx-xWWW250-MT: Male terminal
WWW250-FT : Female TerminalM: Male
F : Female

No Of Contact : 2 To 18 Pin

CONNECTORS

1201

D-Sub



D-Sub Solder Type

1201-xx-x

M: Male
F: Female

No Of Contact : 09.15.19.23.25.37.50 Pin

1102

D-Sub



D-Sub High Density (3 Row) Right Angle PCB Type

1102-xx-x

M: Male
F: Female

No Of Contact: 15.26.44.62.78 Pin

1203

D-Sub



D-Sub Crimp Type

1203-xx-x

1203 -MT : Male Terminal
1203 -FT : Female Terminal

M : Male
F : Female

No Of Contact : 09.15.25.37.50 Pin

1202

D-Sub



D-Sub Straight PCB Type

1202-xx-x

M: Male
F: Female

No Of Contact: 09.15.19.23.25.37
50 Pin

1205

D-Sub



D-Sub Right Angle PCB Type

1205-xx-x

M : Male
F : Female

No Of Contact: 09.15.25.37.50 Pin

**1212***D-Sub*

D-Sub Flat Cable Idc Type

1212-xx-xM: Male
F: Female

No Of Contact: 09.15.25.37.50 Pin

1216*D-Sub*

D-SUB Hood

Metal Hoods**1216-xx-x**P : Plastic
T : Metalized Plastic
M : Metal
Mt : Right Angle Metal Hood

No Of Contact : 09.15.23.25.37.50 Pin

1218A

Screw & Nut For D-Sub Chassis Mount

1217*D-Sub*

Plastic Cap For D-Sub Converter

1217-xx-x

P : Plastic

9/9
9/25
25/25**1219***Dvi*

Right Angle PCB Type Dvi

1219-xxPContact Type: 01: 24+1 Digital
02: 24+5 Analog & Digital**SLV-01****Protective Sleeve For 6,3 mm
90 Terminal**

CONNECTORS

1322

Header



2mm x 2mm (0.079" X 0.079") Pitch
Box Header Dual Row PCB Type

1322-xx-x

S : Straight
R : Right Angle
SM: SMD Type Straight

No Of Contact: 10.14.16.20.24.26.30.34
40.44.50.56.60.64.68 Pin

1321

Header



2mm x 2mm (0.079" X 0.079") Pitch
Shrouded Header With Eject Lever Dual Row PCB Type

1321-xx-x

S : Straight
R : Right Angle
SM : SMD Type Straight

No Of Contact: 20.26.40.44.50
68 Pin

1324

Header



2mmx2mm (0.079" X 0.079") Pitch
Dual Row Idc Socket With Strain Relief

1324-xxP

No Of Contact : 10.16.20.24.34.40
44.50.56.60.64 Pin

1302

Header



2.54 mm x 2.54mm (0.100" X 0.100") Pitch
Boxer Header Dual Row Pcb Type

1302-xx-x

S : Straight
R : Right Angle
SM: SMD Type Straight

No Of Contact: 10.14.16.20.24
26.30.34.40.44.50.56.60.64 Pin

1300

Header

2.54 mmx2.54 mm (0.100" X 0.100")
Pitch Shrouded Header With Eject Lever
Dual Row Idc Type



1300-xxP

No Of Contact 10.14.16.20.26.34
40.50.60.64 Pin

1299

Wire To Board



2.54 mmx2.54 mm (0.100" X 0.100") Pitch Shrouded
Header With Eject Lever Dual Row Idc Type

1299-xxP

No Of Contact 10.14.16.20.26.34
40.50.60.64 Pin

**1301***Header*

2.54 mm x 2.54 mm (0.100"x0.100") Pitch
Shrouded Header With Eject Lever Dual Row PCB Type

1301-xx-x

S: Straight
R: Right Angle

No Of Contact : 10.14.16.20.24
26.30.34.40.44.50.56.60.64 Pin

1304*Header*

2.54 mm x 2.54 mm (0.100"x0.100") Pitch
Dual Row Idc Socket With Strain Relief

1304-xxP

No Of Contact 10.12.14.16.20.24
26.30.34.40.50.60.64 Pin

1305*Header*

2.54mm x 2.54mm (0.100"x0.100")Pitch
Dual Row IDC Transition Plug

1305-xxP

No Of Contact: 10.14.16.20.26.30.34.40
50.60.64 Pin

1306*Header*

2.54 mm x 2.54 mm (0.100"x0.100") Pitch
Dual Row Idc Dip Plug

1306-xx-xP

03: 7.62 mm (0.03") Row To Row
06: 15.24mm (0.6") Row To Row

No of contact : 8.14.16.18.20.24.28
32.40 pin

CONNECTORS

1317

Pin Header



1.27mm (0.05")* 1.27mm (0.05") Pitch Pin Header

1317-xx-x

ST : Single Row Straight
 RT : Single Row Right Angle
 SC : Dual Row Straight
 RC : Dual Row Right Angle
 STD: Single Row Straight Smd Type
 RTD: Single Row Right Angle Smd Type
 SCD: Dual Row Straight Smd Type
 RCD: Dual Row Right Angle Smd Type

No Of Contact: 1X40 (Single Row 1X40 Pin)
 2X40 (Dual Row 2X40 Pin)

1307

Pin Header



2.54mm (0.100") And 2mm (0.079") Pitch Pin Header

1307-xx-x-x

A : 2.54mm(0.100") Pitch
 B : 2mm (0.079") Pitch
 ST : Single Row Straight
 RT : Single Row Right Angle
 RLP: Single Row Right Angle
 SY1: Single Row Straight 22.5Mm Height
 SY2: Single Row Straight 15Mm Height
 SC : Dual Row Straight
 RC : Dual Row Right Angle
 STD: Single Row Straight Smd Type
 RTD: Single Row Right Angle Smd Type
 SCD: Dual Row Straight Smd Type
 RCD: Dual Row Right Angle Smd Type

No Of Contact: 1X40 (Single Row 1X40 Pin)
 2X40 (Dual Row 2X40 Pin)

1319

Pin Header



1.27mm (0.05")* 1.27mm (0.05") Pitch Female PCB Socket

1319-xx-x

ST : Single Row Straight
 RT : Single Row Right Angle
 SC : Dual Row Straight
 RC : Dual Row Right Angle
 STD: Single Row Straight Smd Type
 RTD: Single Row Right Angle Smd Type
 SCD: Dual Row Straight Smd Type
 RCD: Dual Row Right Angle Smd Type

No Of Contact: 1X40 (Single Row 1X40 Pin)
 2X40 (Dual Row 2X40 Pin)

1309

Pin Header

2.54mm (0.100") and 2mm (0.079")Pitch PCB Socket



1309-xx-x-x

A : 2.54 mm(0.100")Pitch
 B : 2mm (0.079")Pitch
 ST : Single Row Straight
 RT : Single Row Right Angle
 SC : Dual Row Straight
 RC : Dual Row Right Angle
 STD: Single Row Straight Smd Type
 RTD: Single Row Right Angle Smd Type
 SCD: Dual Row Straight Smd Type
 RCD: Dual Row Right Angle Smd Type

No Of Contact: 1X40 (Single Row 1X40 Pin)
 2X40 (Dual Row 2X40 Pin)

**1409***Pin Header*

2.54 mm (0.100") Pitch Double Insulator Pin Header

1409-xx-xST : Single Row Straight
SC : Dual Row StraightNo Of Contact: 1X40 (Single Row 1X40 Pin)
2X40 (Dual Row 2X40 Pin)**1410***Pin Header*

2.54 mm (0.100") Pitch Machine Pin Header

1410-xx-xW : Wire Wrap Pcb Socket 17.78Mm Height
M : Single Row Pin Header
S : Single Row Pcb SocketNo Of Contact: 1X40 (Single Row 1X40 Pin)
2X40 (Dual Row 2X40 Pin)**1328***Jumper*

2 mm (0.079") Pitch Jumper

1328-02xA : Standard
B : With Handle**1308***Jumper*

2.54 mm (0.100") Pitch Jumper

1308-02xA : Standard
B : With Handle

IC Socket

1404



1.778mm (0.070") Pitch Standart Ic Socket Dip Type

1404-xxP

No Of Contact: 16.20.24.28.30.40.42
48.52.56.64 Pin

1400

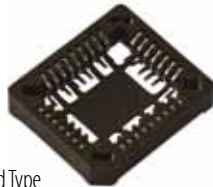


2.54mm(0.100") Pitch Machine Pin Ic Socket Dip Type

1400-xx-xP

03: 7.62mm(0.3")Row To Row Only 8.14
16.18.20.22.24.28 Pin
06: 15.24mm (0.6") Row To Row 24.28
32.40.42.48 Pin
No Of Contact: 8.14.16.18.20.22.24.28
32.40.42.48 Pin

1403



2.54mm(0.100") Pitch Plcc Ic Socket Smd Type

1403-xxP

No Of Contact: 20.28.32.44.52.68.84 Pin

1402



2.54mm(0.100") Pitch Plcc Ic Socket Dip Type

1402-xxP

No Of Contact: 20.28.32.44.52.68.84 Pin

**LW***Card Edge*

3.96mm (0.156") Pitch Dual Row Card Edge

LW-2*x-xN : Straight PCB Type
S : Solder To Cable TypeNo Of Contact: 6.10.12.15.18.22.28
30.36 Pin**1407***Card Edge*

2.54mm(0.100") Pitch PCB Type Dual Row Card Edge

1407-xxP

No Of Contact: 36.44.62.86.98 Min

1411*Mini Din*

Solder Type Mini Din Connector

1411-xx-xF : Female
M : Male

No Of Contact: 2.3.4.5.6.7.8 Pin

1412*Card Edge*

PCB Type Right Angle Female Mini Din Connector

1412-xx-x

P: Plastic

No Of Contact: 2.3.4.5.6.7.8 Pin

FPC*Fpc-Ffc*

2.54mm(0.100") Pitch FPC

FPC-xx-x-xS : Single Contact
D : Double Contact
R : Right Angle
S : Straight

No Of Contact : 2 To 30 Pin

SIM CARD*Memory Card*

Sim Card Connector SMD Type

SIM-xxPNo Of Contact: 01:2*3 (6 Contact)
02:2*4 (8 Contact)

CONNECTORS

7001

Modular



Cable Type Modular Plug

7001-xPxC-x

A: Standart
B: Shielded

No Of Contact : 2.4.6.8.10
Contact Position:4.6.8.10

7007

Modular



PCB Type Right Angle Modular Jack

7007-xPxC

No Of Contact: 2.4.6.8.10
Contact Position:4.6.8.10

7006

Modular



PCB Type Vertical Modular Jack

7006-xPxC

No Of Contact: 2.4.6.8
Contact Position: 4.6.8

7210

Modular



Modular Jack To Modular Jack Adaptor

7210-xPxC

No Of Contact: 2.4.6.8
Contact Position:4.6.8

7211

Modular



Modular Jack To Modular Jack Adaptor

7211-xPxC

No Of Contact : 2.4.6.8
Contact Position :4.6.8

Cap

Modular



Boot For Rj45

7468*Modular*

Telephone Box

7468-xPxC

No Of Contact: 2.4.6.8
Contact Position:4.6.8

7501*Modular*

Keystone Jack

7501-xP

No Of Contact: 6.8 Pin

8000*Mic*

Solder Type Male Mic

8000-xx-x

A: Solder Type Chassis Mount
B: Solder To Cable Type
C: Solder Type Chassis Mount With Flange

No Of Contact: 2.3.4.5.6.7.8 Pin

8100*Mic*

Solder To Cable Type Female MIC

8100-xxP

No of contact: 2.3.4.5.6.7.8 pin

XLR

Mini Xlr

XLR-x-x

A: Solder To Cable Type Male
B: Solder To Cable Type Female
C: Solder Type Chassis Mount Male

No Of Contact: 3.4.5 Pin

CONNECTORS

PLT-3/7A

Power



3 Pin Chassis Mount Receptacle And Cable Type Plug Metal Power Connector 7A 250V

PLT-4/7A

Power



4 Pin Chassis Mount Receptacle And Cable Type Plug Metal Power Connector 7A 250V

PLT-4/30A

Power



4 Pin Chassis Mount Plug And Cable Type Receptacle Metal Power Connector 30A 250V

PLT-7/15A

Power



7 Pin Chassis Mount Plug And Cable Type Receptacle Metal Power Connector 15A 250V

PLT-8/25A

Power



8 Pin Chassis Mount Receptacle And Cable Type Plug Metal Power Connector 25A 250V

PLT-10/10A

Power



10 Pin Chassis Mount Plug And Cable Type Receptacle Metal Power Connector 10A 250V

PLT-16/5A

Power



16 Pin Chassis Mount Plug And Cable Type Receptacle Metal Power Connector 5A 250V

PLT-26/5A

Power



26 Pin Chassis Mount Plug And Cable Type Receptacle Metal Power Connector 5A 250V

PLS-7/5A

Power



7 Pin Chassis Mount Plug And Cable Type Receptacle Metal Power Connector 5A 250V

