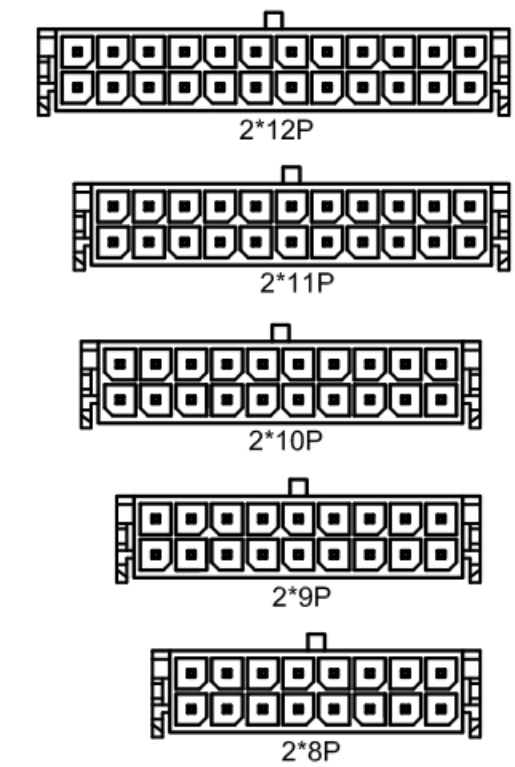
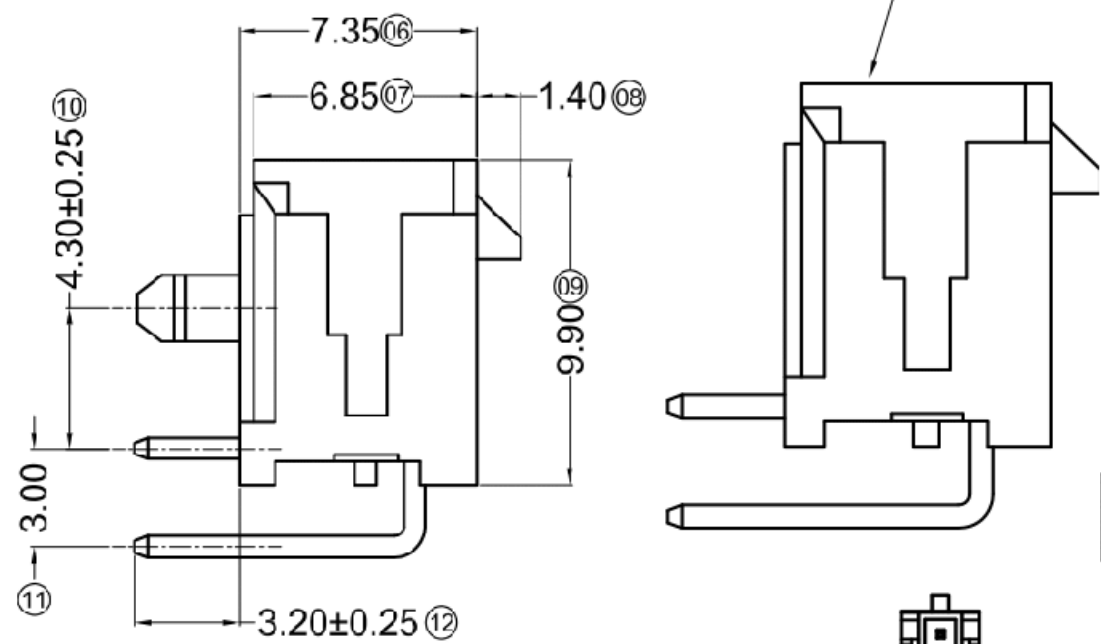
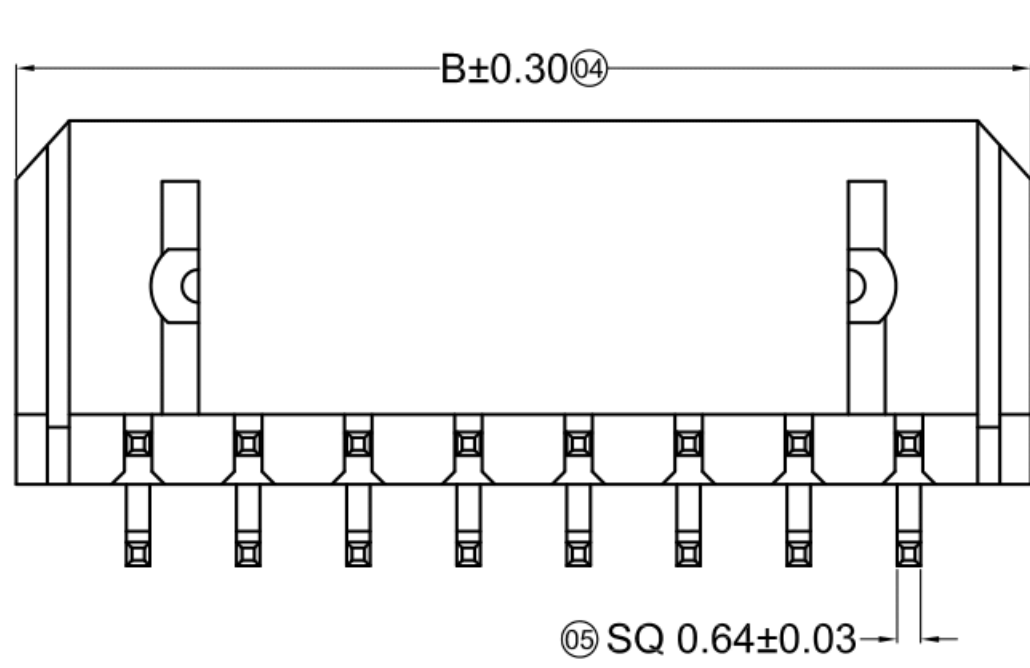


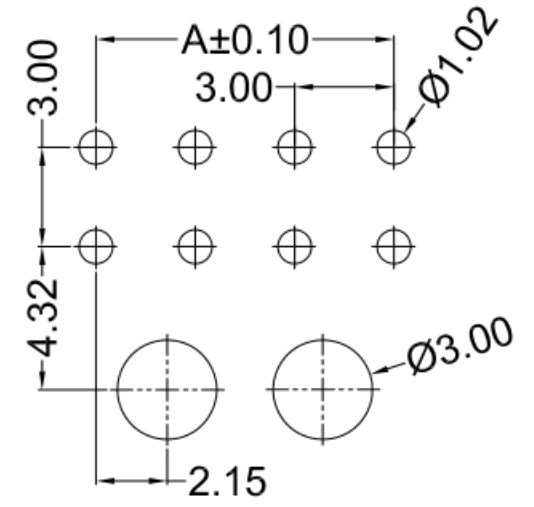
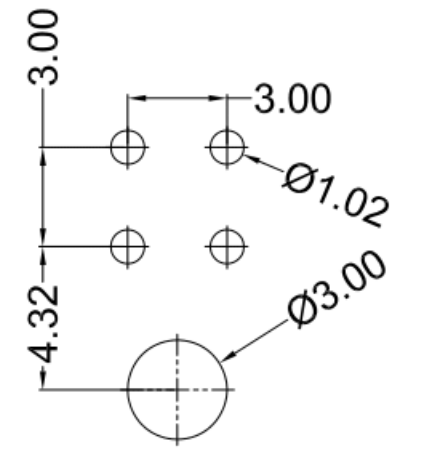
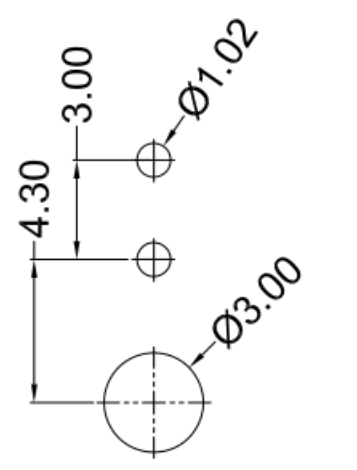
- Specifications :**
- Voltage rating: 250V AC / DC
 - Current rating: 5A AC / DC
 - Withstanding voltage: 1500V AC/minute
 - Temperature range: -25°C~+85°C
 - Insulation resistance: ≥1000MΩ
 - Contact resistance: ≤10mΩ
 - After environmental testing: ≤20mΩ

3025 W R X- 2*XX X-XX XX XX - XX
 ① ② ③ ④ ⑤ ⑥ ⑦ ⑧ ⑨ ⑩

- ① Series No.
- ② Category: W-wafer
- ③ Welding Board Angle: R-90°
- ④ Welding Way: Blank-DIP
- ⑤ Row No.-Pin No.: 2*XX-2*01P~2*12P
- ⑥ Special NO. : W-Column Free
- ⑦ Material: PT-PBT 94V-0 ; LP-LCP 94V-0 ; 6T-PA6T 94V-0
- ⑧ Planting Category: V01-Gold Flash; SN-Bright tin plating
- ⑨ Color: Blank-Natural Color Black
- ⑩ Mold No./Mark/Special No.




Poles	Dimensions (mm)	
	A	B
2*01	---	6.65
2*02	3.00	9.65
2*03	6.00	12.65
2*04	9.00	15.65
2*05	12.00	18.65
2*06	15.00	21.65
2*07	18.00	24.65
2*08	21.00	27.65
2*09	24.00	30.65
2*10	27.00	33.65
2*11	30.00	36.65
2*12	33.00	39.65



2P P.C.B LAYOUT

4P~6P P.C.B LAYOUT

8P~24P P.C.B LAYOUT

Date	-	Rev.	Revision Detail	Rev.Dt.	Rev.by	Part No		
Designed by	Rabia MUZAÇ	-				5558-12R		
Checked by	Ersin YÜKSEL							
						Drawing Nr.	Scale	Sheet No
						-	NONE	1/1