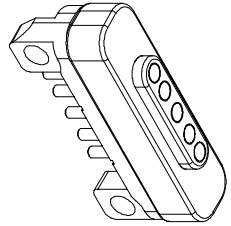
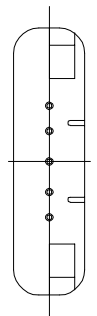
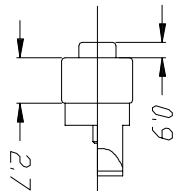


NOTES:  
 1) PLATING:  
 1) Power Pin: brass Au10u"over 50-90u" Ni  
 4) Housing: PA46 Black  
 5) Magnet: NS2  
 2.0 Rated voltage(Per Contact): 12 Volts  
 3.0 Rated Current(Per Contact): 2A maximum  
 4.0 Insulation Resistance: 100MΩ minimum  
 5.0 Dielectric Withstanding Voltage: 100V at 60HZ  
 6.0 Contact Resistance: 30mΩ maximum before test  
 and 60mΩ maximum after test at pogo pin working stroke  
 7.0 Working Temperature Range: -30~85°



Date	27.12.2021	Rev.	Revision Detail	Rev.Dt.	Rev by	Part No
Designed by	Zeynep ŞAHİN					2023-05F SPIN FEMALE
Checked by	Fatih BOLACA					
						Drawing Nr. -
						Scale NONE
						Sheet No 1/1

