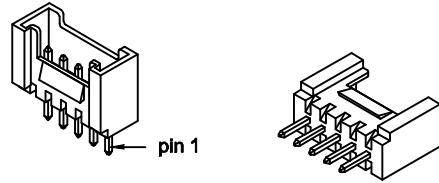


VIEW	TOLERANCE	
	0-10	±1
	11-250	±5
UNIT: mm	251-500	±10
	501-1000	±20
	1001-3000	±50
	3001-5000	±100
	5001- >	±150

Δ Order Code : **200G1-XX-SL**

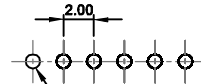
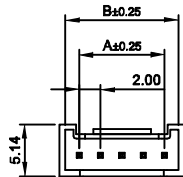
↳ Straight Angle
↳ Number of contact : 3 to 13 pin



Δ Material : Nylon 66 UL 94V-0
Pin: Brass/Tin-plated

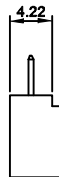
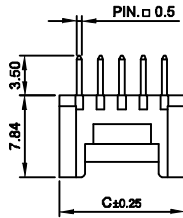
**TTAF
APPROVAL**

Voltage Rating : 250V AC,DC
Current Rating : 2A
Withstanding Voltage : 800V AC/minute
Insulation Resistance : 1000M Ω Min.
Temperature Range : -25 °C ~ + 85 °C
Contact Resistance : 20m Ω Max.



P.C.B Hole dia. $\varnothing 0.8\text{mm} \pm 0.05$
P.C.B Thickness 0.8mm~1.6

P.C.B. LAYOUT



Contact No.	Dimensions (mm)	
	A	B
3	4.00	8.00
4	6.00	10.00
5	8.00	12.00
6	10.00	14.00
7	12.00	16.00
8	14.00	18.00
9	16.00	20.00
10	18.00	22.00
11	20.00	24.00
12	22.00	26.00
13	24.00	28.00

Date	04.02.2014	Rev.		Revision Detail	Rev.Dt.	Rev.by	Part No		
Designed by	Yeşim AKSOY	-					200G1-XX-SL		
Checked by	Fatih BOLACA								
							Drawing Nr.	Scale	Sheet No
							-	NONE	1/1