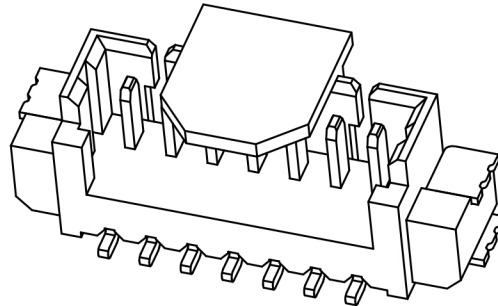
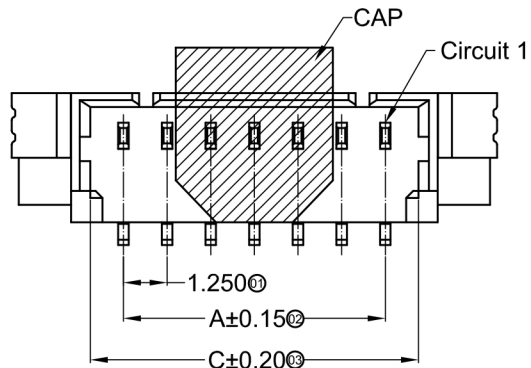


1 2 3 4 5 6

**TTAF  
APPROVAL**

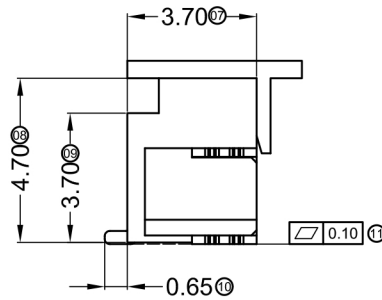
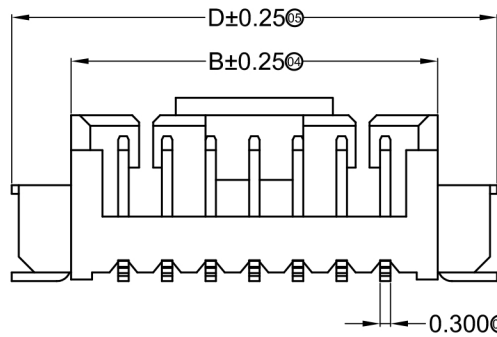
A



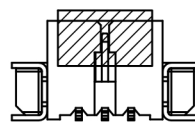
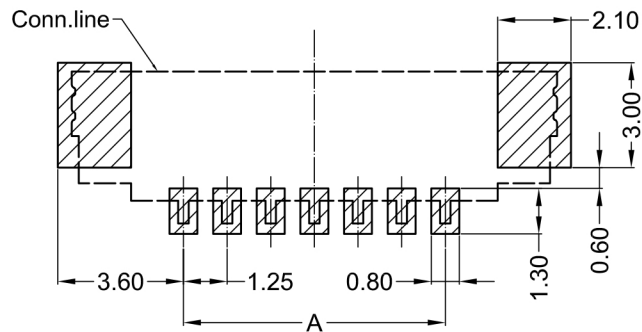
■ **Specifications :**

- Voltage rating: 125V AC / DC
- Current rating: 1A AC / DC
- Withstanding voltage: 250V AC/minute
- Temperature range: -25°C~+85°C
- Insulation resistance: ≥100MΩ
- Contact resistance: ≤20mΩ
- After environmental testing: ≤40mΩ

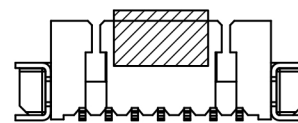
B



C



02P~03P Single Gap  
Scale 0.6:1



04P~16P Double Gap  
Scale 0.6:1

D

Recommended P.C.B Layout  
General Tolerance±0.05

Date	30.11.2016	Rev.	Revision Detail		Rev.Dt.	Rev.by	Part No		
Designed by		-					1101-XXM		
Checked by	Fatih BOLACA						Drawing Nr.	Scale	Sheet No
								NONE	1/1

1 2 3 4 5 6

A

B

C

D

A4