

VIEW	TOLERANCE	
	0-10	±1
	11-250	±5
	251-500	±10
	501-1000	±20
UNIT: mm	1001-3000	±50
	3001-5000	±100
	5001->	±150

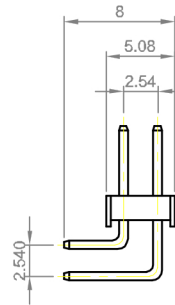
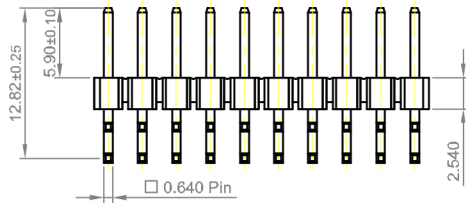
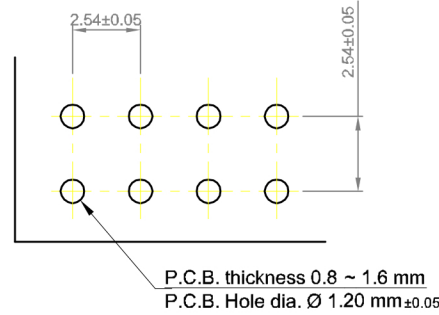
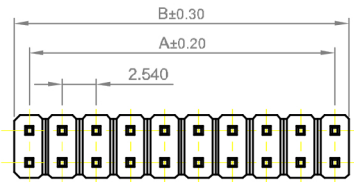
Δ Order Code : 1307-2*XX-RCA

Number of contact :
2x2 to 2x40 pin

**TTAF
APPROVAL**

Δ Material : P.B.T UL94V-0
Pin.:Brass/Gold plated

Voltage Rating : 250V AC,DC
Current Rating : 3A.
Withstanding Voltage : 1.000V AC/minute
Insulation Resistance : 1.000M Ω Min.
Temperature Range : -25 °C ~ + 85 °C
Contact Resistance : 20M ohm max



Contact No.	Dimensions(mm)	
	A	B
2x2	2.54	5.08
A:2.54x(PART NO. OF PIN/2-1) B:2.54x(PART NO. OF PIN/2)		
2x40	99.06	101.60

Date	03.11.2014	Rev.	-	Revision Detail		Rev.Dt.		Rev.by		Part No	1307-2*XX-RCA		
Designed by	Yeşim AKSOY	Checked by	Fatih BOLACA							Drawing Nr.		Scale	Sheet No
										-		NONE	1/1

